

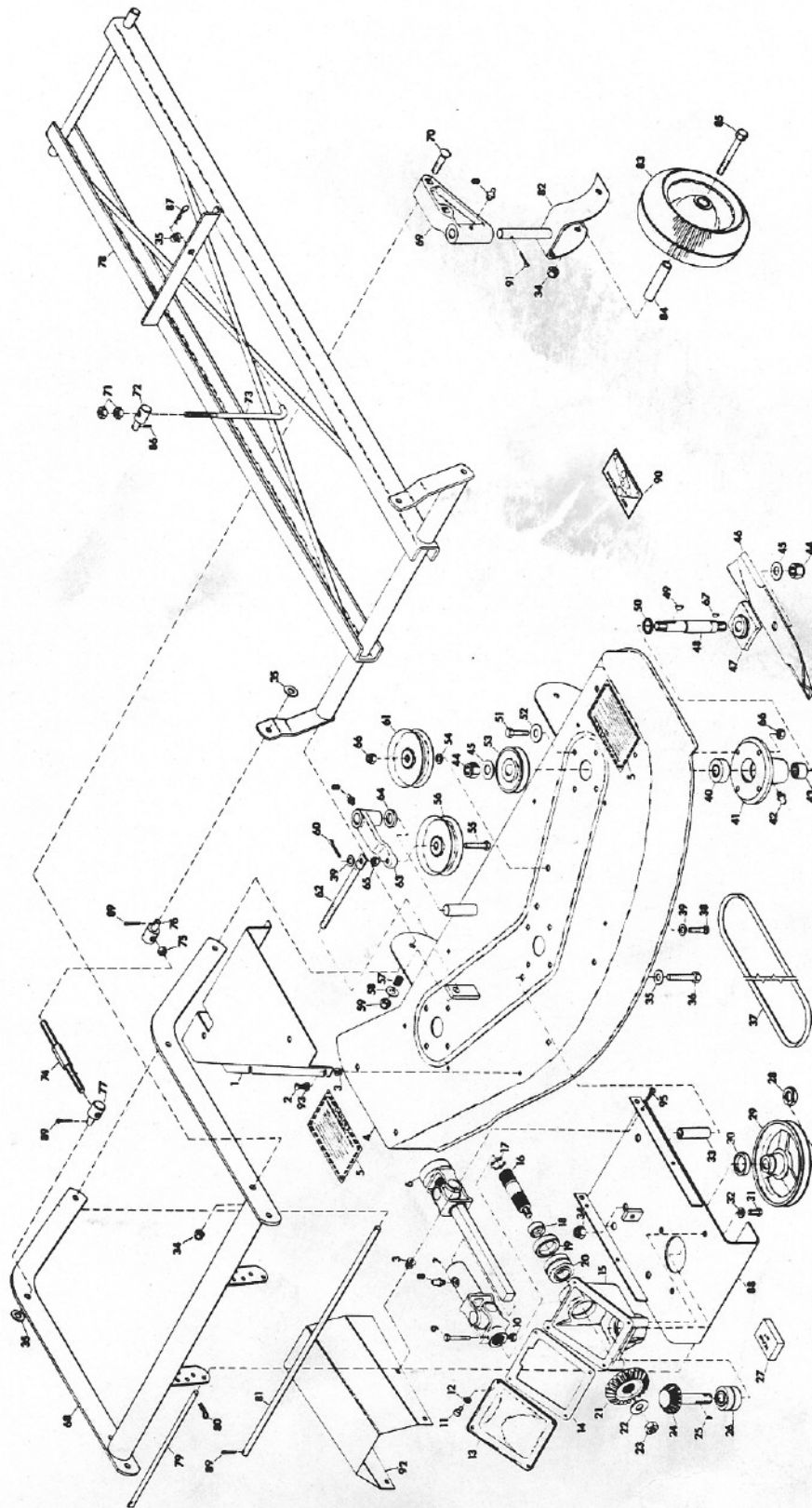


To continue its program of quality and design improvement, the manufacturer reserves the right to change specifications, design or prices without notice and without incurring obligation.

ILLUSTRATED PARTS LIST

FRONT MOUNTED 40"
3 SPINDLE ROTARY MOWER
FOR RIDING TRACTOR

Model Number	15666E1
Effective Date	9-15-72
Form Number	19845P1



<u>ITEM NO.</u>	<u>PART NO.</u>	<u>DESCRIPTION</u>
1	14674P1	Pulley Cover - R.H.
NS	14675P1	Pulley Cover - L.H.
2	160536	1/4-20 x 5/8 Pan Head Machine Screw
3	11777P1	Plastic Grommet
4	19359A1	Deck Weldment
5	18549P1	Danger Decal
6	15802P1	Male U-Joint End
7	13518P1	Female U-Joint End
8	9411027	Lube Fitting
9	180044	1/4-20 x 2 Hex Head Bolt
10	9419454	1/4-20 Washer Insert Locknut
11	180016	1/4-20 x 1/2 Hex Head Capscrew
12	120380	1/4 Spring Type Lockwasher
13	10982P1	Gear Housing Cover
14	11231P2	Gear Housing Gasket
15	14636P1	Casting Gear Box
16	14637P1	Shaft, Drive
17	14642P1	Ring, Retaining
18	14641P1	Spacer, Ring
19	14646P1	Seal, Grease
20	14640P1	Bearing, Roller
21	19607P1	Bevel Gear
22	15369P1	Washer
23	435507	1/2-13 Washer Insert Locknut
24	19608P1	Gear, Pinion Shaft
25	431787	#61 Woodruff Key
26	14644A1	Roller Bearing
27	12134P1	U-Joint Kit
28	451539	Hex Jam Nut
29	14660P1	Sheave, Drive
30	14645P1	Grease Seal
31	180173	1/2-13 x 1 Hex Head Bolt
32	120384	1/2 Spring Type Lockwasher
33	14669P1	Spacer
34	435507	1/2-13 Washer Insert Locknut
35	120396	17/32 Flatwasher
36	180193	1/2-13 x 3-3/4 Hex Head Bolt
37	14673P1	V-Belt
38	180129	3/8-16 x 1-7/8 Hex Head Bolt
39	120388	7/16 x 1 x .083 Flat Washer
40	11641P1	Ball Bearing
41	10984P2	Bearing Housing
42	9411010	Grease Fitting
43	11235P1	Needle Bearing
44	9418692	5/8-11 Washer Insert Locknut
45	131016	21/32 x 1-5/16 x .095 Flatwasher
46	14668P1	Blade
47	10986P2	Blade Cradle
48	19443P1	Bearing Housing Shaft
49	124549	#9 Woodruff Key
50	11229P1	Oil Seal

<u>ITEM NO.</u>	<u>PART NO.</u>	<u>DESCRIPTION</u>
51	180124	3/8-16 x 1-1/4 Hex Head Bolt
52	120388	7/16 Flat Washer
53	10988P1	Spindle Sheave
54	14672P1	Idler Spacer
55	11313P1	Drilled Bolt
56	11255P1	Idler Sheave
57	11779P1	Spring
58	120395	15/32 Flat Washer
59	271501	7/16-14 Hex Nut
60	179252	1/16 x 1 Cotter Pin
61	11316P1	Idler Sheave
62	14671P1	Idler Rod
63	10992P1	Idler Pivot Arm
64	14670P1	Idler Arm Spacer
65	124829	3/8-16 x 7/32 Jam Nut
66	456004	3/8-16 Washer Insert Locknut
67	124543	1/8 x 1/2 Woodruff Key
68	15777A1	Frame Weld Wheel
69	15781P1	Arm Wheel
70	126784	Bolt Carriage, 1.2 N.C. x 2.5
71	120238	1/2-13 Hex Jam Nut
72	11317A1	Mower Lift Pivot Assembly
73	19313P1	Lift Rod
74	15783P1	Rod Level Adjustment
75	120378	1/3-13 Hex Nut
76	15805P1	Anchor Level
77	15785P1	Anchor Level
78	15794A1	Frame Weldment Lift
79	15787P1	Pin Adjustment
80	11860P1	Hair Pin Cotter
81	15800P1	Pin Pivot
82	11948A1	Caster Fork Weldment
83	6535P1	Gauge Wheel
84	11950P1	Bushing
85	189314	1/2-13 x 4- 3/4 Hex Head Bolt
86	142485	Groove Pin
87	15691P1	Hair Pin Cotter
88	14655A1	Gear Housing Support
89	137185	1/8 x 1 Cotter Pin
90	11715P1	Belt Installation Decal
91	120123	1/8 x 1-1/4 Cotter Pin
NS	14635A1	Drive Assembly
92	18720P1	Guard
93	120392	9/32 x 5/8 x .065 Flat Washer
94	160536	1/4-20 x 5/8 Pan Head Machine Screw